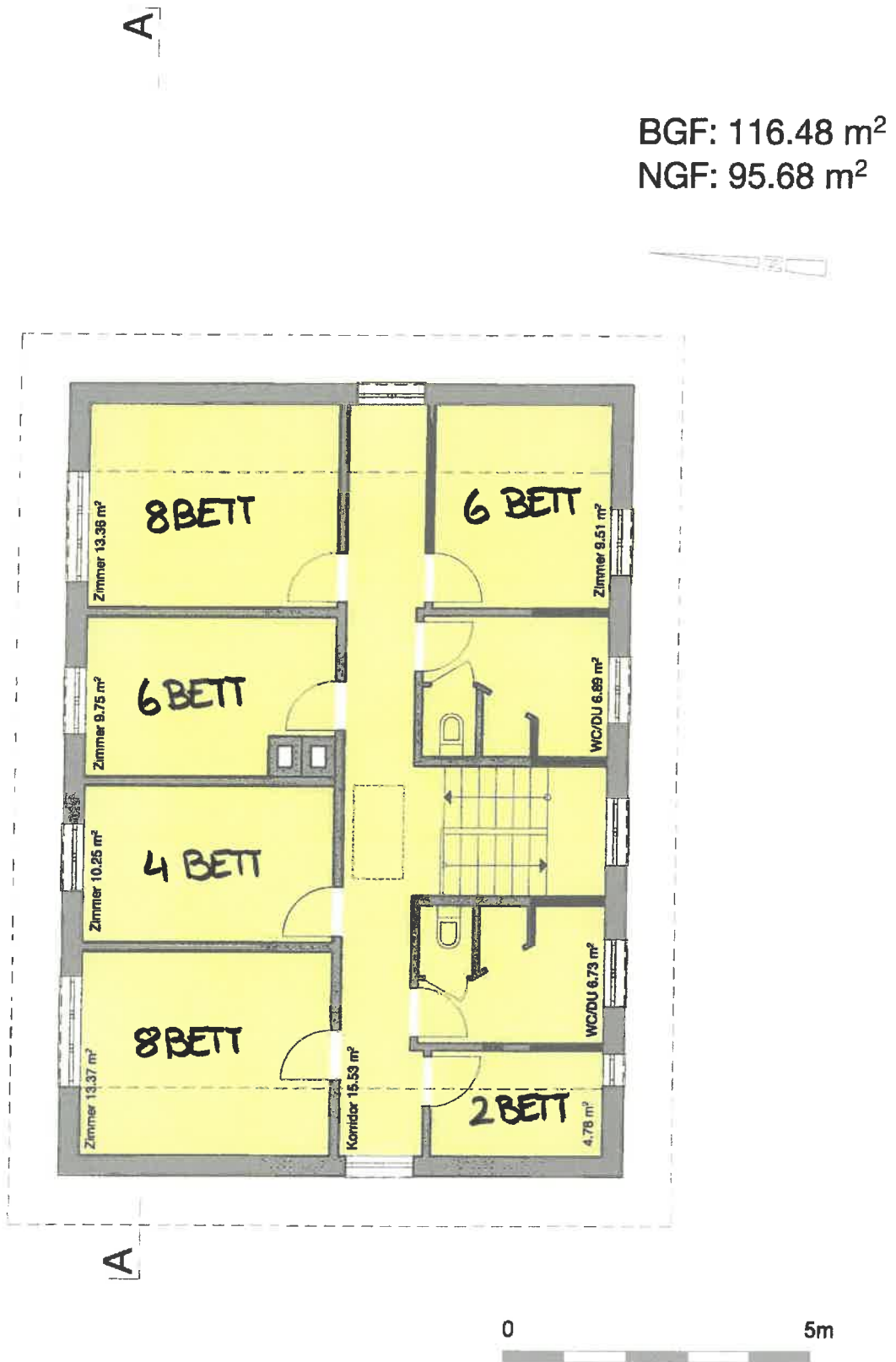
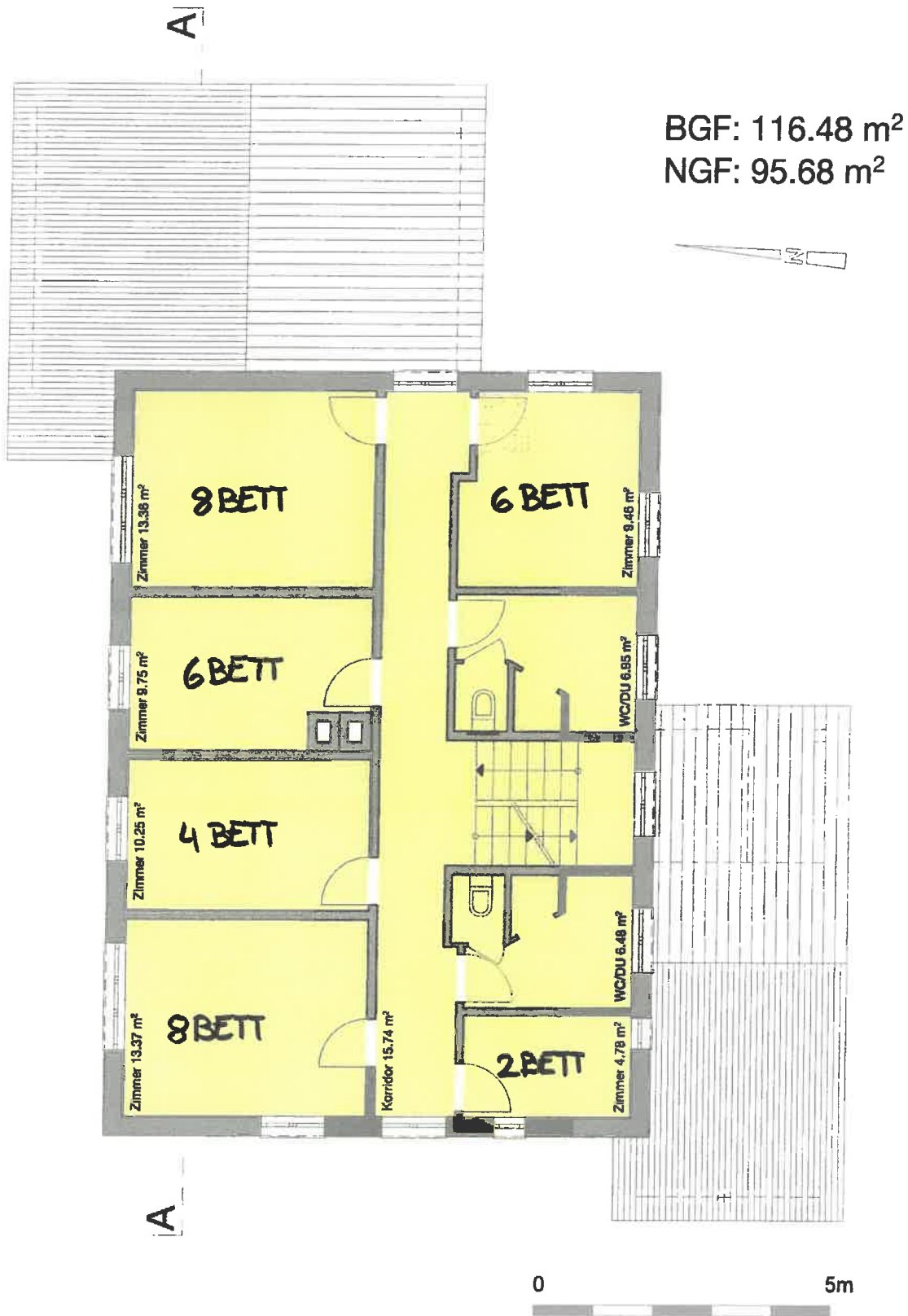


2. Obergeschoss



1. Obergeschoss



Architectural drawing showing the floor plan of the 1st floor (1. Obergeschoss) with room layouts, bed counts, and areas. The plan includes a central corridor, multiple rooms, and a staircase. A scale bar indicates 0 to 5 meters. The total Gross Building Area (BGF) is 116.48 m² and the Net Building Area (NGF) is 95.68 m².

Erdgeschoss

